

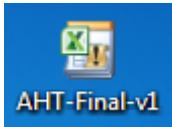
Anti-Human Trafficking (AHT v1)

Excel Data Entry Module (AHT-Final-v1)

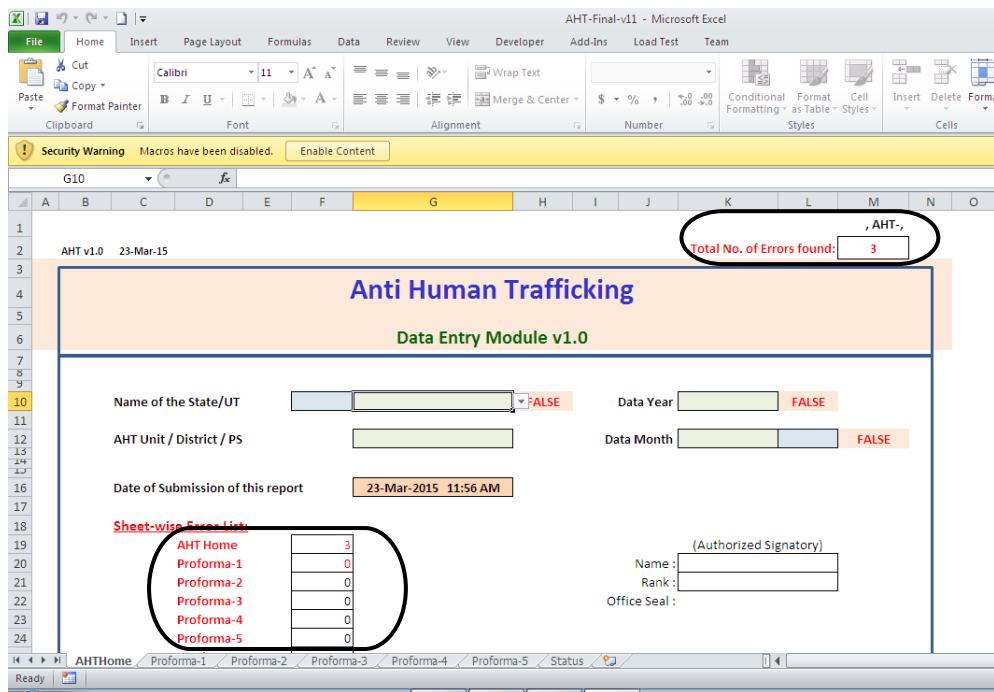
Instruction Manual

Step by Step procedure:

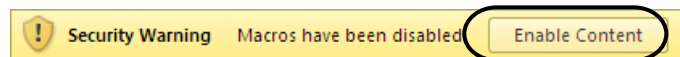
- 1) To start entering Anti-Human Trafficking data for any particular month, double click on the **AHT-Final-v1.xlsm** template file.



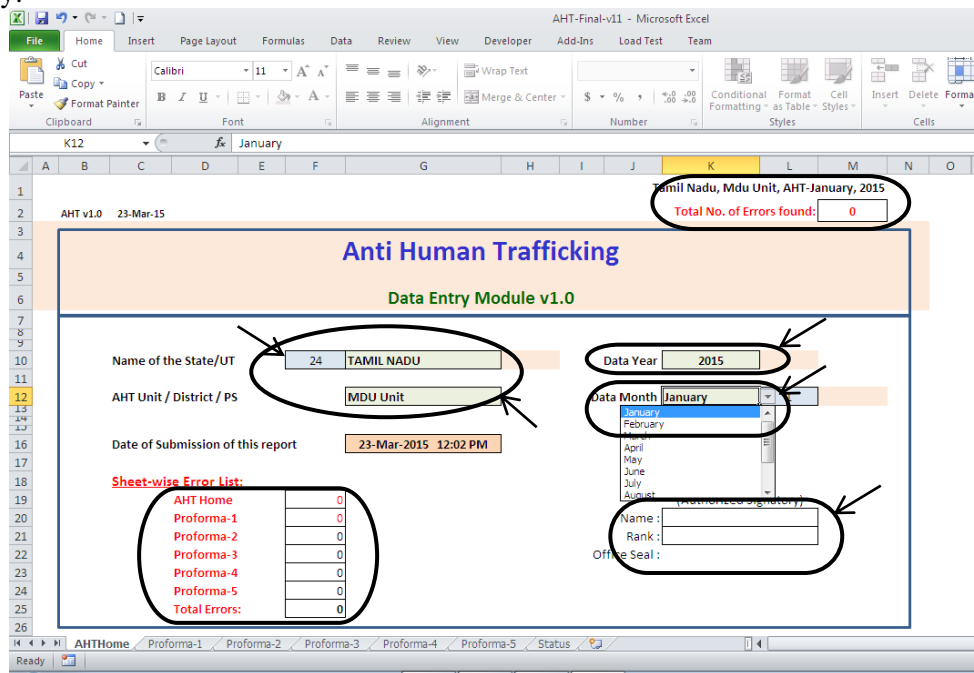
- 2) This will create a new excel file for entering AHT data.



- 3) If any Security Warning appears in Excel, click on **Enable Content** button to enable the macros.



- 4) In the first page, Select the State/UT name, Data Year, Data Month and enter the AHT unit if any.



- 5) Enter data on sheets **Proforma-1** to **Proforma-5**. If there is any mismatch in the data, it shows FALSE with the description about the error.

Errors: 3

Proforma-1

CASES OF HUMAN TRAFFICKING REPORTED UNDER VARIOUS SECTIONS OF IPC & SLL, SEX WISE PERSONS ARRESTED AND THEIR DISPOSAL DURING THE MONTH

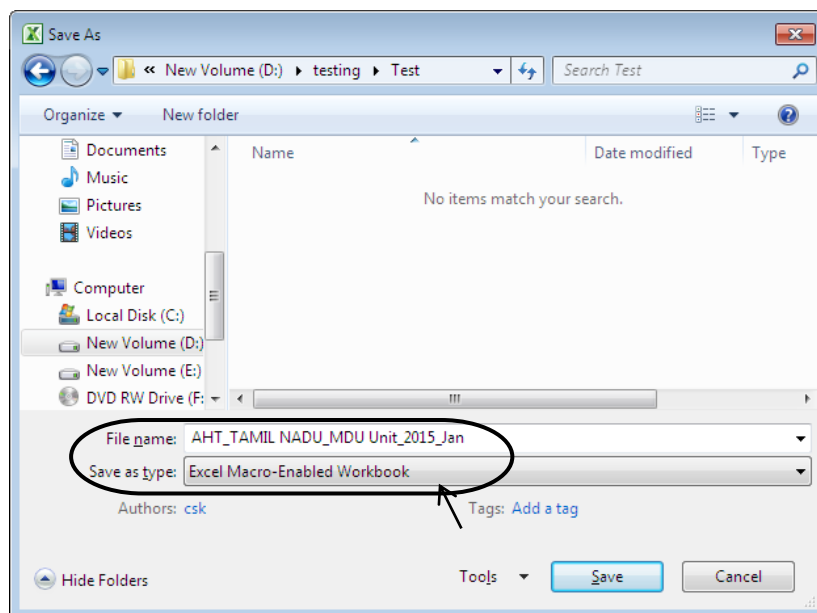
Total Number of Cases Reported under Human Trafficking and Section wise Offences reported	Cases Reported during the month	Cases Chargesheeted during the month	Cases Disposed off otherwise by Police during the month	Cases Pending for investigation at the end of the month	Cases Convicted by court during the month	Cases Acquitted/ Discharged by court during the month	Cases Pending for trials at the end of the month	Total Number of Persons Arrested		
								Male	Female	Transgender
(1)	(2)	(3)	(4)	(5)	(6)	(7)	(8)	(9)	(10)	
1	10	2	1	1						
Sl. No. Sections of IPC and Acts reported under above reported cases under Trafficking during the month										
1.10	Juvenile Justice (Care & Protection of children) Act (u/s 23, 24(1), 24(2), 25 & 26(Other related amended section))		1							
1.11	Other Acts									
1.12	Total Offences	0	0	0	0	0	0	0	0	0
VALIDATION CHECKS:		FALSE	FALSE	FALSE						
REASON FOR ERROR:		If sections/Act shown as nil, figures under cases reported should also be nil	If sections/Act disposed off shown as nil, figures under cases disposed off should also be nil	If sections/Act pending for investigation shown as nil, figures under cases pending for						

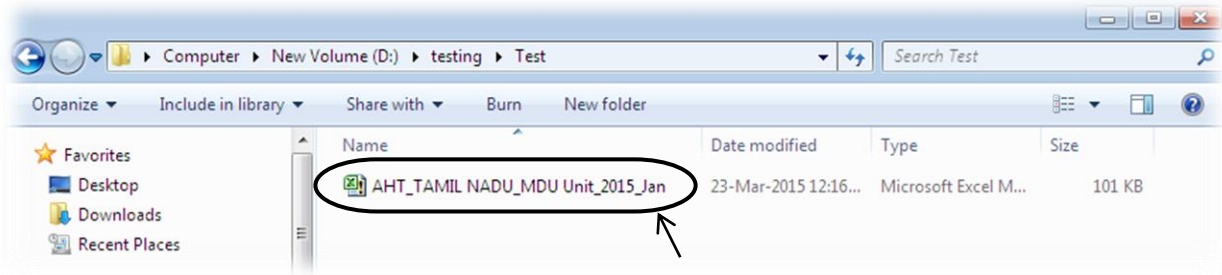
- 6) Please correct the data to ensure that no FALSE appears in the sheets. However, if the data is correct but FALSE appears, then the same may be informed to NCRB in writing, so that it will be corrected in the future version.

Total Number of Cases Reported under Human Trafficking and Section wise Offences reported	Cases Reported during the month (1)	Cases Chargesheeted during the month (2)	Cases Disposed off otherwise by Police during the month (3)	Cases Pending for investigation at the end of the month (4)	Cases Convicted by court during the month (5)	Cases Acquitted/ Discharged by court during the month (6)	Cases Pending for trials at the end of the month (7)	Total Number of Persons Arrested		
								Male (8)	Female (9)	Transgender (10)
Total Number of Cases reported under Human Trafficking	10	2	1	1						
Sections of IPC and Acts reported under above reported cases under Trafficking during the month										
1.9 SC/ST (Prevention of Atrocities) Act (u/s 3(1)(vi))			1							
1.10 Juvenile Justice (Care & Protection of children) Act (u/s 23, 24(1), 24(2), 25 & 26(Other related amended section))		1								
1.11 Other Acts										
1.12 Total Offences	0	4	1	0	0	0	0	0	0	0
VALIDATION CHECKS:	FALSE			FALSE						

- 7) Please note that **CUT & PASTE** and **DRAG & DROP** features **should not be used** while entering data.

- 8) Save the file with .xlsm extension.



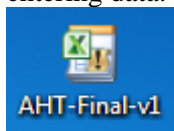


9) To make corrections in existing data (for ex.MDU unit January data of 2015), double click on the existing file to open it.

10) This will open the existing file, so that data corrections may be carried out.

Tamil Nadu, Mdu Unit, AHT-January, 2015										
CASES OF HUMAN TRAFFICKING REPORTED UNDER VARIOUS SECTIONS OF IPC & SLL, SEX WISE PERSONS ARRESTED AND THEIR DISPOSAL DURING THE MONTH										
Total Number of Cases Reported under Human Trafficking and Section wise Offences reported	Cases Reported during the month	Cases Chargesheeted during the month	Cases Disposed off otherwise by Police during the month	Cases Pending for investigation at the end of the month	Cases Convicted by court during the month	Cases Acquitted/ Discharged by court during the month	Cases Pending for trials at the end of the month	Total Number of Persons Arrested		
								Male	Female	Transgender
	(1)	(2)	(3)	(4)	(5)	(6)	(7)	(8)	(9)	(10)
1	Total Number of Cases reported under Human Trafficking	10	2	1	1					
Sl. No.	Sections of IPC and Acts reported under above reported cases under Trafficking during the month									
1.8	The Prevention of Money Laundering Act 2002 (Under section 3 , 4 & other related section of the Act)		1							
1.9	SC/ST (Prevention of Atrocities) Act (u/s 3(1)(vi))			1						
1.10	Juvenile Justice (Care & Protection of children) Act (u/s 23, 24(1), 24(2), 25 & 26(Other related amended section))		1							
1.11	Other Acts									
1.12	Total Offences	0	4	1	0	0	0	0	0	0
VALIDATION CHECKS:		FALSE			FALSE					
	If sections/Act				If sections/Act					

11) Double clicking on **AHT-Final-v1.xlsm** icon will always create a new empty AHT file for entering data.



AHT-Final-v11 - Microsoft Excel

File Home Insert Page Layout Formulas Data Review View Developer Add-Ins Load Test Team

Clipboard Font Alignment Number Styles

Security Warning Macros have been disabled. Enable Content

G10

A B C D E F G H I J K L M N O

1 ,AHT-,

2 AHT v1.0 23-Mar-15 Total No. of Errors found: 3

3

4 **Anti Human Trafficking**

5 **Data Entry Module v1.0**

6

7

8

9

10 Name of the State/UT FALSE Data Year FALSE

11 AHT Unit / District / PS Data Month FALSE

12

13

14

15

16 Date of Submission of this report 23-Mar-2015 11:56 AM

17

18

19 **Sheet-wise Error List:**

20 AHT Home 3

21 Proforma-1 0

22 Proforma-2 0

23 Proforma-3 0

24 Proforma-4 0

25 Proforma-5 0

(Authorized Signatory)

Name :

Rank :

Office Seal :

AHTHome Proforma-1 Proforma-2 Proforma-3 Proforma-4 Proforma-5 Status

Ready

☺☺☺