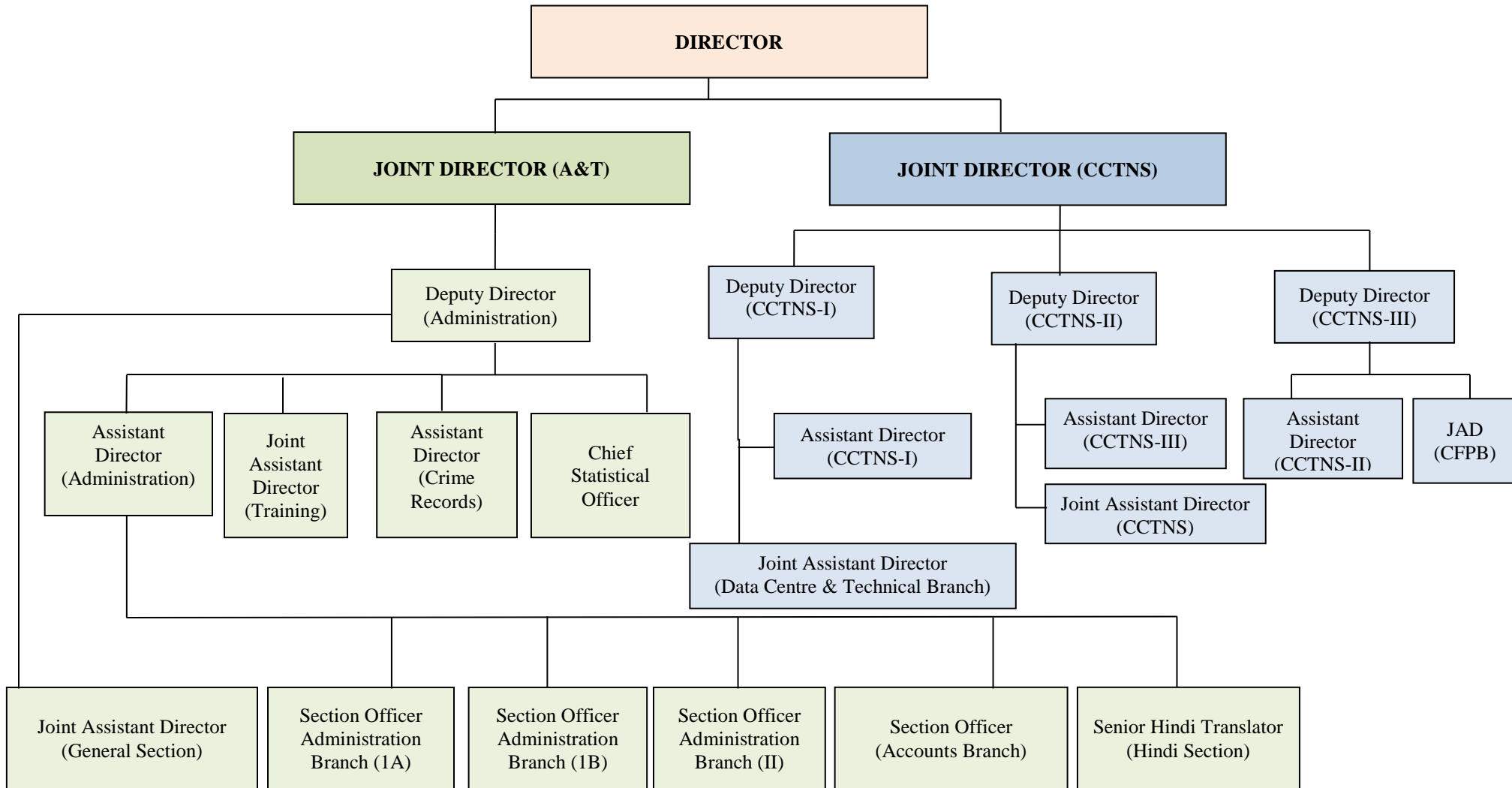


ORGANISATION CHART



- Ad.I (A) : Administrative matters relating to IPS Officers, Ministerial Staff, HC, Constables Etc.
- Ad.I (B) : Administrative matters relating to CFPB Staff.
- Ad.II : Administrative matters relating to staff of C&S Division, i.e. DD & AD (non-IPS), JAD, JSO, DPA-B, DPA-A, DEOs (All grades), vigilance matters of all staff, etc.
- Dy.S (G) : General administration like posting of HC/Constables, procurement of stationery, furniture, maintenance of Vehicles, housekeeping, etc.